

The story of a Froyle wildlife pond

- Planning, Funding, Construction
- Species biodiversity

and it's not just about the newts

Barry Clark

BEFORE Grazed field with short grass



AFTER: Pond and meadow area 2017



The story of a Froyle wildlife pond

- Froyle Parish Plan 2013. -survey
support for new pond project by 118 villagers
- Location agreed with Froyle Park (NJG)
60m x 40m area but had buried pipes
- EHDC grant £20,000
from S106 developer contributions
- Froyle Parish Council support
commissioned topographical survey
- Detailed Planning Application
300m², 25m x 15m, 1.5m deep, shallow edges
- Contractor quotes 2015

Construction: Removing the turf April 2016



Construction: Digging the hole



Construction: unrolling liner & membrane



Construction: Positioning the liner



Construction: Anchor trench for liner



Construction: Levelling the perimeter



Construction: Filled to brimming April 2016



Wildflower meadow seeded onto bare ground



British native seed from Emorsgate

- Bare ground rotovated and prepared
- Various wildflower seed mixes for
chalky, damp, pond edge, tussock meadow
- Broadcast sown by hand Autumn 2016
- Perennial weeds needed controlling
thistles, nettles and docks
- Many hours of work by volunteers

Volunteers removing sallow seedlings



Volunteers weeding the sown meadow



Wildflower meadow June 2017



Wildflower meadow June 2020



Tufted vetch, wild carrot, bird's-foot trefoil



Wildflower meadow June 2023



Meadow Crane's-bill and Hedge Bedstraw



Habitat addition: building Log pile



Habitat addition: Hibernaculum construction



Habitat addition: Hibernaculum



First Great Crested Newt Aug 2016



Habitat addition: Hibernaculum



Species biodiversity

- Pond allowed to colonise naturally
no fish, aquatic species or pond plants added
- Clean water from rain only
no stream, ditch or agricultural run off
- Manage pond vegetation and meadow
bulrush and reedmace invasive
- Dragonflies found pond in first summer
now 17 species of dragonfly and damselfly

Emperor dragonfly male



Emperor dragonfly in flight



Emperor dragonfly female egglaying



Dragonfly larva



Exuvia



Emperor Dragonfly emerging in June



Common Darters egglaying in pond



Azur Damselflies egglaying on water crowfoot



Azur Damselflies egglaying on water mint



Migrant Hawkers



Orb-weaver spider



Wasp spider



Tetragnatha extensa



Longhorn beetle on Ox-eye daisy



Hoverfly *callicera aurata* (nationally scarce)



Resident wren at pond area



Juvenile mute swan



Heron eating newt



Species biodiversity

- Four amphibian species recorded
toad, frog, smooth newt and great crested newt
- Great Crested Newts protected species
an offence to intentionally harm
- Evidence of breeding in pond
meta population in Upper Froyle
- Esso pipeline construction surveys
maximum count 28 great crested newts

Great Crested Newt egg on water mint



Great Crested Newt larvae



Male Great Crested Newt



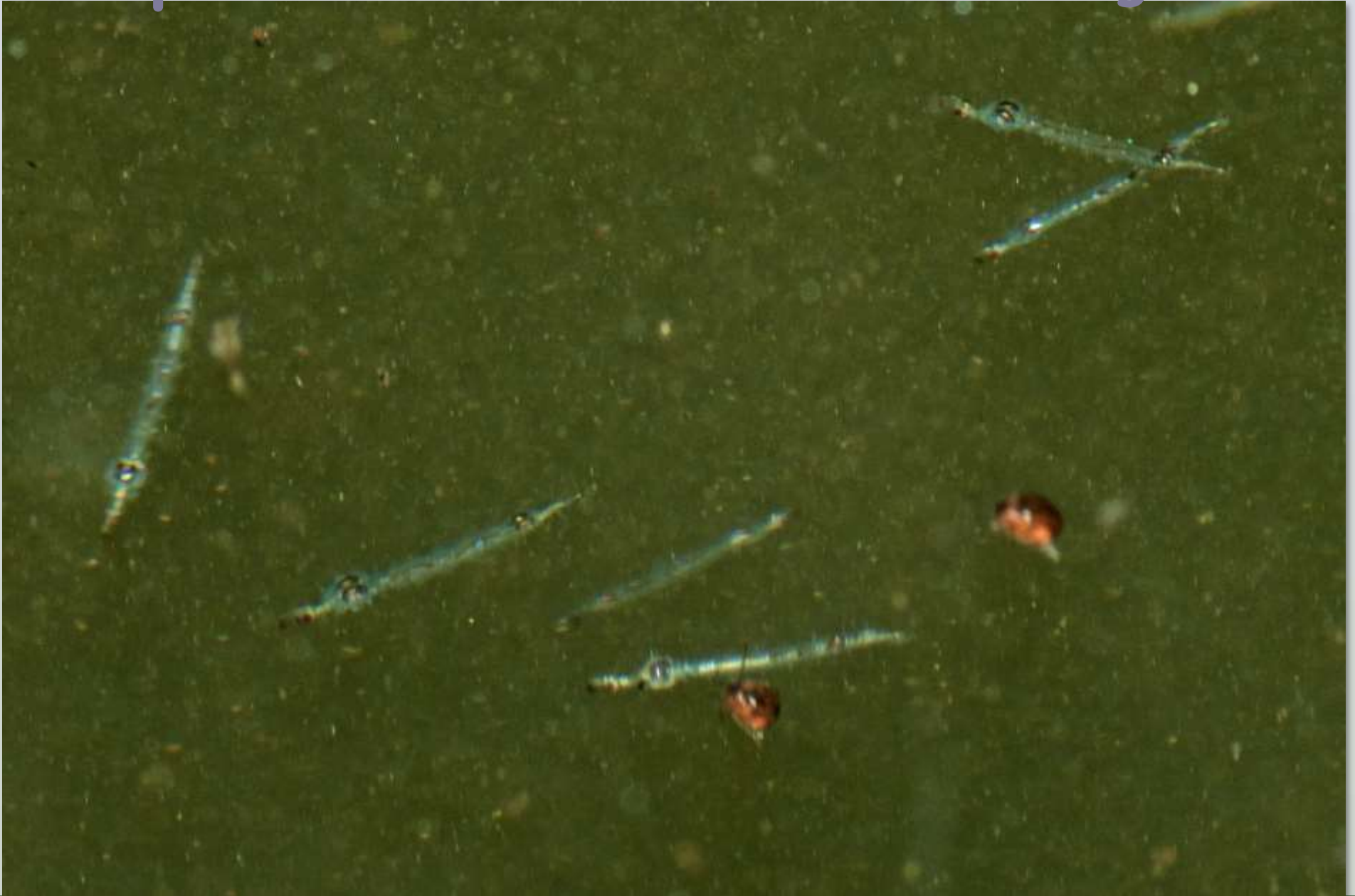
Female Smooth Newt



Mating toads in pond shallows



Amphibian larvae food -microorganisms



Greater water boatman (backswimmer)



Great diving beetle



Pond Skater



Water Stick Insect



Caddis fly larva inside case



Species biodiversity

- Record sightings, take photos
expert ID if needed, observation timing
- Butterflies and Moths indicators
health of the natural environment
- Small things are basis of food chains
more insects than higher species
e.g. Beetles, Hoverflies, Bees, Wasps, Ants, Bugs, Crickets

Habitat Habitat Habitat

Species recording at pond



Water Aven



Water Figwort



Figwort sawfly larva



Caterpillars on nettle



Peacock on Water Mint



Clouded Yellow on knapweed



Common Blue on bird's-foot trefoil



Lamp attracts moths after dark



Privet hawkmoth



Bufftip



Burnet moth larva



Elephant hawkmoth



Volunteers maintain the habitat



Volunteers maintain the habitat



Volunteers maintain the habitat



Volunteers maintain the habitat



Acknowledgements

- Froyle Wildlife members and volunteers
community lead project
- East Hampshire District Council
developer contribution grant, councillor's grant
- Froyle Parish Council
support and grants
- Froyle Park Ltd and NJG
permission for pond

Visit the pond area any sunny day

